

Pride of Place Project

(1963 - 2013)

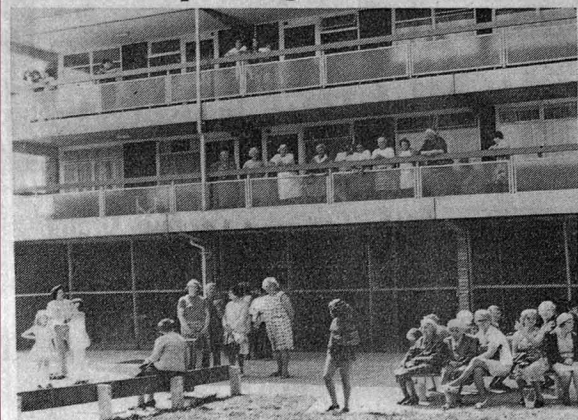
Come and join

Community Connected

14th March at
Piper Hall,
Cambridge Road Estate
Kingston from 2- 6pm

Bring your memories or
photos on the day
We will scan
and record them for
our virtual village

Official opening of £4m estate



COMPLETION of the £4 million Cambridge Road Estate in Kingston was marked by the official opening on Friday of the Ely Court Community Centre and old people's flatlets (pictured).

Mr. Reginald Eyre, Parliamentary Under-Secretary at the Department of the Environment, who unveiled a plaque in the community centre, told guests: "I have been most impressed by the size and style of the estate of some 300 homes which took four years to build.

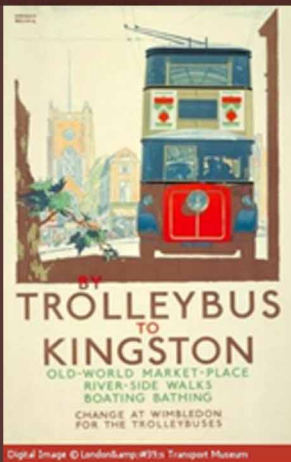
"It is clear that Kingston Council has an intense interest in its older citizens and this is only right. Our elders have lived through many hardships and social upheavals. Their efforts have given us the

life we have, and it is only fair that they should live the rest of their lives in comfort and independence.

The community centre is designed to accommodate a wide range of facilities, and I am sure the tenants on the estate will find it a useful and enriching extension to their family lives."

The 40 old people's flatlets consist of a bed-sitting room, fully-equipped kitchen and cloakroom, all centrally heated. The social centre has a large hall and small one, with adjacent offices and a kitchen.

Guests at the ceremony included the Mayor and Mayoress, Councillor and Mrs. Claude Fotts, and Alderman Miss D. Tapping, chairman of Kingston's Housing Committee.



Preserve your memories of
living and working in Norbiton



kingstoncommunityconnected
www.communityconnected.org.uk

Tel: 020 8255 8040